

## **AASF Safety Spot - May 2023**

### **Weather for Everyone:**

The AASF Spring Seaplane Seminar featured two weather presentations that generated a lot of interest from our membership. Our presenters were:

Graham Weston, Meteorologist in Charge at the Anchorage Center Weather Service Unit (CWSU, National Weather Service) presented **Web-based Tools for Aviation Weather**.

Gary Hufford, Former Regional Scientist, National Weather Service presented **Using Satellite and Radar Images to Make Go/No Go Decisions**.

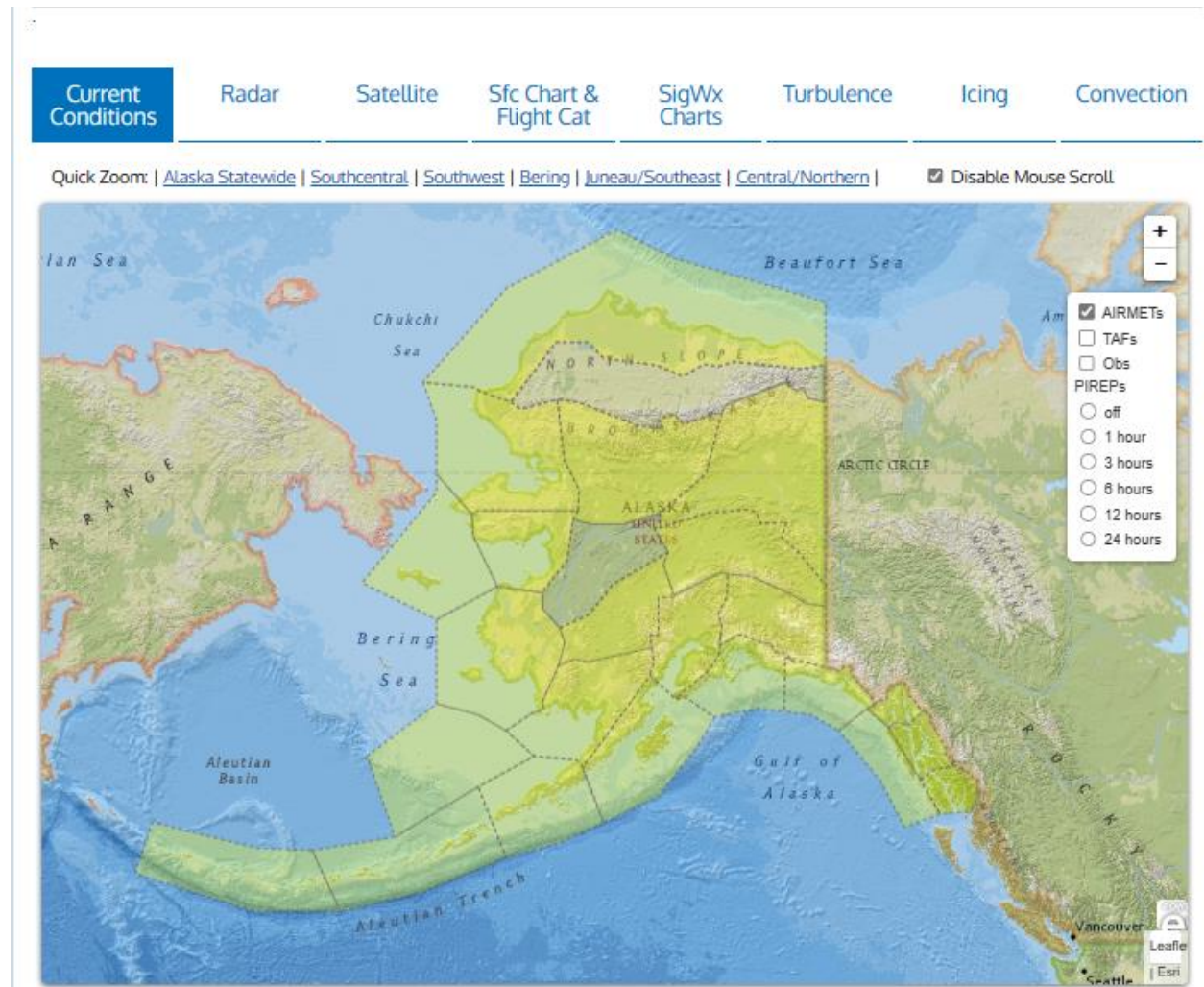
I had a little trouble keeping up as the presentations bounced from web site to web site. The following pages contain the top-level links to the web sites Graham and Gary referenced at the seminar. Each page has an active link along with a picture of the web site's top-level page so you can easily identify the web site's content.

I plan to download this document to my computer desktop / phone to keep it handy. Then I'm going to explore each of the web sites in depth and make note of what I find useful. Your useful and my useful may be different depending on our missions and existing meteorological conditions. When there's fires burning in the summer, I'll be very interested in the UAF's Alaska Wildfires Smoke Forecast page. If there's a volcano spewing ash, my interest will shift to the Anchorage Volcanic Ash Advisory Center page. Most of the time I will start (and sometimes finish) with the Alaskan Aviation Weather Unit site. In any event, I'll keep the document on my desktop and use the quick links before flying.

Here's hoping you find this document useful.

Rocky Capozzi  
Chairman, AASF

# Alaska Aviation Weather Unit



[Anchorage Volcanic Ash Advisory Center \(weather.gov\)](https://www.weather.gov/vaac/)

https://www.weather.gov/vaac/

**NATIONAL WEATHER SERVICE**  
NATIONAL OCEANIC AND ATMOSPHERIC ADMINISTRATION

### Anchorage Volcanic Ash Advisory Center

[Weather.gov](#) > Anchorage Volcanic Ash Advisory Center

Anchorage Volcanic Ash Advisory Center  
Advisory Center

[Current Hazards](#) [Current Conditions](#) [Radar](#) [Forecasts](#) [Rivers and Lakes](#) [Climate and Past Weather](#) [Local Programs](#)


This is the listing of the most recent volcanic ash advisories and graphics. Please note, that the vast majority of the VAA products get transmitted under one WMO header (FVAK21PAWU). The additional headers are rarely used except in the event of multiple eruptions.

WMO Header	VAA	VAG
FVAK21PAWU	X	X
FVAK22PAWU	X	X
FVAK23PAWU	X	X
FVAK24PAWU	X	X
FVAK25PAWU	X	X

You can find more detailed information at the [Alaska Volcano Observatory](#)

Map showing volcanic activity status in Alaska. Legend: Normal (green), Advisory (yellow), Watch (orange), Warning (red), Unmonitored (grey). The map shows several volcanoes along the Aleutian Peninsula with status indicators. The Aleutian Trench, Bering Sea, and Sea of Okhotsk are also labeled.

<https://www.weather.gov/zan/>



# NATIONAL WEATHER SERVICE

NATIONAL OCEANIC AND ATMOSPHERIC ADMINISTRATION

- HOME
- FORECAST
- PAST WEATHER
- SAFETY
- INFORMATION
- EDUCATION
- NEWS
- SEARCH
- ABOUT

Local forecasts by FCM, ZIP or ZIP code

Enter location:

[Location Help](#)

## Heavy Snow, Fire Weather Concerns and Increasing Severe Weather Threats

A storm tracking through the Rockies will bring heavy snow for higher elevations into Wednesday. Strong winds and dry conditions may result in rapid spread of any wildfires across portions of the Southwest. As this storm tracks eastward, increasing threats of severe weather and excessive rainfall across portions of the Southern Plains and lower Mississippi Valley during Wednesday. [Read More](#)

---

### Anchorage Center Weather Service Unit

[Weather.gov](#) > Anchorage Center Weather Service Unit

Anchorage Center Weather Service Unit  
Center Weather Service Unit

[Current Hazards](#) [Current Conditions](#) [Radar](#) [Forecasts](#) [Strategic Planning Aids](#) [Tactical Planning Aids](#) [Additional Info](#)

---

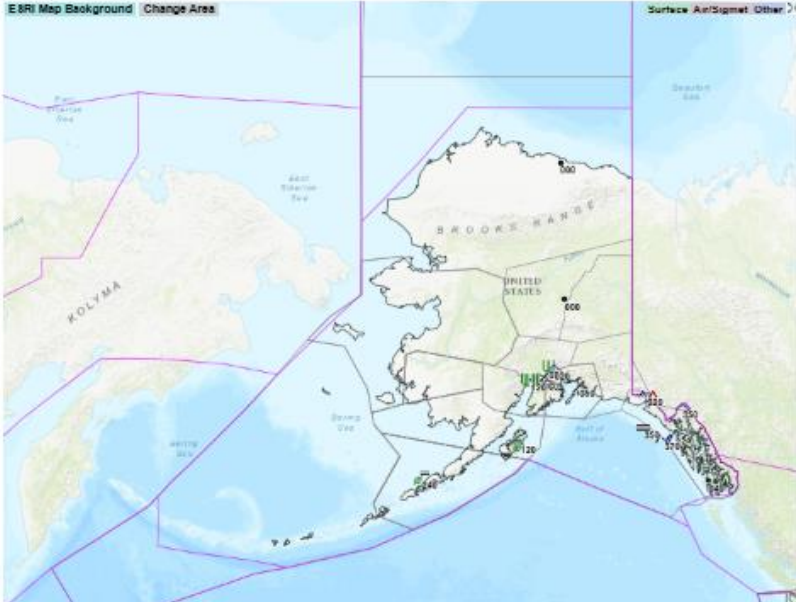
#### ZAN CWSU PLANNING BRIEFING

Refresh page for the latest information.

- SIGMETs and CWAs**
- Required PIREPs
- Satellite
- Radar
- Surface Chart
- Convection
- Icing
- Low Level Turbulence
- High Level Turbulence
- Flying Weather

---

**EBRI Map Background** [Change Area](#)



Surface Air/Sigmet Other





## Experimental Alaska Aviation Guidance (AAG)

Alaska Region Headquarters  
Regional Headquarters

[Alaska Aviation Weather Unit \(AAWU\)](#)  
[Alaska Aviation Guidance \(AAG\) Frequently Asked Questions](#)  
[FAA Information for Operators guidance on the use of AAG](#)

Alaska Aviation Guidance (AAG) is a completely automated and experimental product designed to provide a short-term projection of weather conditions at select locations based off of Local Aviation Model Output Statistics (LAMP). The goal of this product is to provide additional local aviation guidance to Alaska airports that have an AWOS or ASOS observations, but do not have Terminal Aerodrome Forecasts (TAF). The projection covers the next six hours, and is updated every hour at forty minutes past the hour.

AAG is intended for use under Visual Meteorological Conditions within the next 6 hours for flight times of two hours or less in duration. FAA regulations require AAG to be used in conjunction with METARs, Pilot Reports (PIREPs), the Area Forecast (FA), Significant Meteorological Information (SIGMETs) and Airmen's Meteorological Information (AIRMETs) to ensure the weather conditions at the estimated time of arrival will be at or above the minimums and operations can be conducted with the performance limitations of the aircraft.

Due to limitations in LAMP guidance, AAG will not include forecasts of convective activity, blowing snow, or smoke. If precipitation is forecast the operators should review all available weather information, including SIGMETs, weather radar, and satellite imagery, to determine if hazardous weather will be present when the aircraft arrives and plan appropriately.

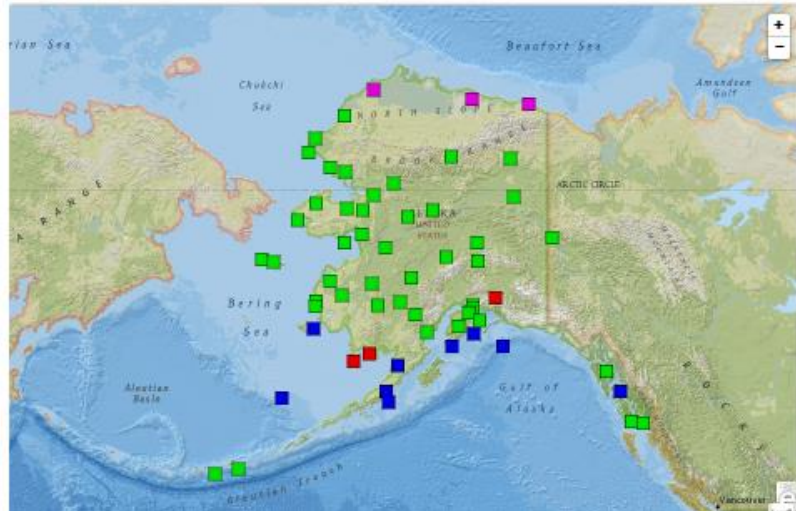
Prior to every flight, pilots should gather all information vital to the nature of the flight. This site is informational in nature and is designed to assist pilots and aircrews for flight planning and weather familiarization. It may be used in conjunction with other preflight information sources needed to satisfy all the requirements of 14 CFR 91.103 and is not to be considered as a sole source of information to meet all preflight action. Pilots can complete their regulatory-compliant preflight briefing by using other automated resources or from Flight Service at [www.1800wxbrief.com](http://www.1800wxbrief.com) or by calling 1-800-WX-BRIEF.


**Pilot feedback is requested during this experimental product. Please send your feedback to the NWS through the following survey: <https://www.surveymonkey.com/r/AlaskanAvnGuidance>**

### Legend:

- LIFR (ceiling less than 500 ft and/or visibility less than 1 mile)
- IFR (ceiling between 500-1000 ft and/or visibility between 1-3 miles)
- MVFR (ceiling between 1000-3000 ft and/or visibility between 3-5 miles)
- VFR (ceiling greater than 3000 ft and visibility greater than 5 miles)
- Missing

Disable Mouse Scroll





# NATIONAL WEATHER SERVICE

NATIONAL OCEANIC AND ATMOSPHERIC ADMINISTRATION

Local forecast by "City, St" or ZIP code  
[City, State or ZIP code] [Go]


Location Help

## NWS Forecast Office : Anchorage, AK

Weather.gov > Anchorage, AK Anchorage, AK  
Weather Forecast Office

Current Hazards | Current Conditions | Radar | Forecasts | Rivers and Lakes | Climate and Past Weather | Local Programs

Quick Zoom: [Alaska Statewide](#) | [Southcentral](#) | [Southwest](#) | [Bering](#) | [Juneau/Southeast](#) | [Central/Northern](#) |  Disable Mouse Scroll



Land Hazards

- Warning
- Advisory
- Watch
- Special Wx


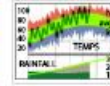
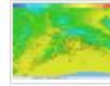



Marine Hazards

- Heavy Fog Spray
- High Wind
- Storm Warning
- Gale Warning
- Small Craft Adv






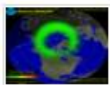
Hover over a zone

Cities: [on](#) | [off](#) - Legend: [on](#) | [off](#)

public updated Tue Apr 25 15:53  
marine updated Tue Apr 25 07:45



TV Weather | Satellite | Keweenaw Radar | Graphical Forecast | Climate Records | One Glance Forecast





# UAFSMOKE

Wildfire Smoke Prediction for Alaska

- Home
- Forecasts
- Current Fires
- Documentation
- About

### Welcome to [smoke.alaska.edu](http://smoke.alaska.edu)!

The Weather Research and Forecasting model with inline Chemistry and fire plume rise dynamics (WRF/Chem) is used as core model to forecast the atmospheric dispersion of smoke downstream from Alaska wildfires. Forecasts for up to 72 hours are updated daily with current fire and weather information.

UAFSMOKE is an initiative supported by the [Alaska Climate Research Center](#) at the Geophysical Institute of the University of Alaska Fairbanks in cooperation with colleagues from NOAA's Global System Division, Brazil's Center for Weather Forecasting and Climate Studies (CPTEC/INPE), and the USFS Missoula Fire Sciences Lab.

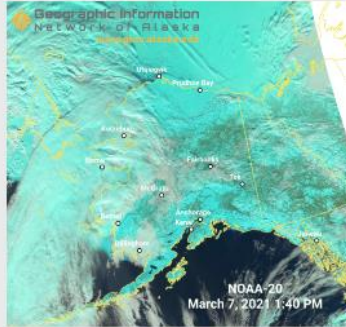


quick access, reliable products for forecasters & researchers

## A Satellite Direct Broadcast Facility at the University of Alaska Fairbanks

Near real-time weather monitoring for Alaska and its adjacent oceans

[See Our Products >](#)



NOAA-20 VIIRS (DayLandCloud RGB), March 07, 2021

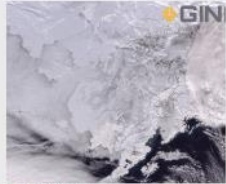
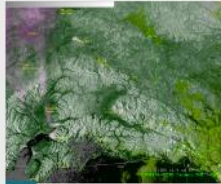


Image Showcase

### Cloud-Free Day in the Alaskan Winter

February 13, 2023

What does Alaska in winter look like on a cloud free day? Like this NOAA-20 captured this True Color RGB image on February 2, 2023 ...



Blog

### Snow, Fog, Clouds and Some Nighttime Views

November 10, 2022

Living this far north means that the Alaskan winters are dark, with very little direct sunlight. This limits the use of some satellite products, such ...



News

### Webinar Overview of the 2022 Alaska Fire Season

November 7, 2022

There's an upcoming webinar on Tuesday, November 15 @ 11:00 AM AKDT! Climate specialist Rick Thoman from the ACCAP and ...